

## X4JET

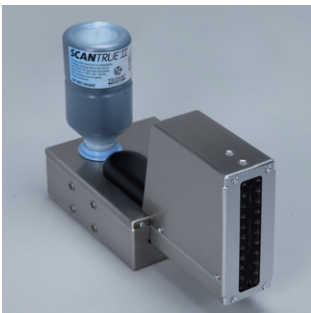


# X4JET

**The X4JET is a universal, blindingly fast print controller for inkjet printing, which can control different types of inkjet printing technology either simultaneously or alternately.**

The flexibility of this reliable and fast system is impressive, because this new and compact solution is now capable of printing both primary and secondary packaging on two sides and on one or two independent production conveyors or marking at up to four printing positions simultaneously. The print controller is maintenance free, thereby offering considerable investment and cost benefits.

- Texts, use-by dates, barcodes, 2-D codes, graphics, and logos
- Up to 3,000 serializations per minute with HP printing technology and 600 dpi resolution
- Simultaneous or alternate control of HP and Piezo printing technologies is possible
- Variable symbol heights of between 1 and 50 mm with HP printheads
- and between 3 and 400 mm with Piezo printheads
- One- or two-sided coding of packaging or on two different production lines
- 1:1 data transfer for real-time printing
- iDesign software





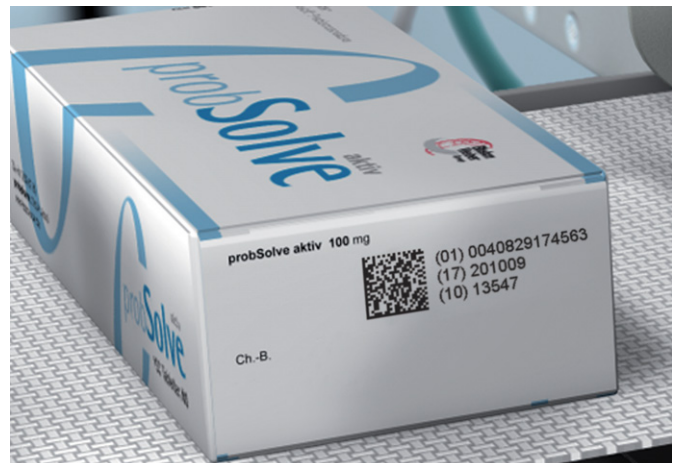
inkjet  
technology by  
  
 invent



## X4JET

With the all-new X4JET, the BluhmWeber Group has launched on the market a system that can control both up to four HP and up to four Piezo printheads. Texts, barcodes, and company logos can also be printed simultaneously or alternately using both printing technologies. HP technology printheads can print symbol heights of between 1 and 50 mm, while Piezo technology printheads can print symbol heights of between 3 and 400 mm. The X4JET is capable of printing both primary and secondary packaging on one or both sides even on two independent production lines using different printing starts and printing speeds.

What's more, the system is blindingly fast: using HP printing technology, the X4JET manages up to 3,000 serializations per minute in the form of variable barcodes or 2-D codes. The compact controller is easy to integrate into complex plants. Data is transferred 1:1 to the printheads via standard interfaces such as Ethernet and USB, making real-time printing without stack processing possible. Operation is easy thanks to the iLogik controller and an integral, high-resolution display. Even specialists with no experience of printing will quickly find their way around the menu and adjust settings.



## Technical data:

### Number of print heads

1 to 4 print heads per system

### Print heights

- With HP Print heads from 1 to 50 mm
- With Trident print heads from 3 to 400 mm

### Print direction

Left/right or right/left, from the top or from the side

### Print head distance

Maximum 5 mm from the product

### Speeds

- Trident print heads
  - Up to 200 m/minute, depending on font size and intensity
- HP print heads
  - Up to 90 m/minute with a resolution of 300 dpi
- Pro-Version:**
  - Up to 360 m/minute with Hi-Speed version and a resolution of 150 x 300 dpi
- Barcode applications up to 60 m/minute

### Resolution

- Horizontal: 100 to 900 dpi
- Vertical: up to 600 dpi with HP print heads
- Vertical: up to 192 dpi with Trident print heads

### Text memory

Unlimited

### Text length

2 m

### Pro-Version:

6 m

### Font- and logo memory

2 GB

### Automatic functions

Counter, date with offset, variable data fields,

### Barcodes

EAN 8, EAN 13, EAN 128, 2/5 ITF, 2/5 ITF with hash total code 128, UPC A, UPC E, DUN 14  
2D codes: Datamatrix, EAN Datamatrix, QR-Code

### Interfaces

USB A, USB B, TCP / IP, RS232

### Inputs controller

- 2 x Light barrier (M8)
- 2 x shaft encoder (M8)
- 4 x inputs NPN / PNP, reversible by software

### Outputs controller

- OK, warning, alarm / signal light
- 4 x programmable potential-free relay outputs

### Electrical connection

Controller: 90 to 240 VAC, 50/60 HZ, max. 100 W

### Dimension

Controller: 220 x 230 x 140 mm

### Ambient conditions

- Ambient conditions: 5 °C bis 40 °C
- Relative humidity: 10 bis 90 %
- Non-considering

### Key features

- Print height up to 400 mm with four print heads
  - 2-channel version for both-sided prints of packages or prints of packages at two independent product lines with print heights up to 200 mm
  - Big range of different writings and true type fonts
  - Activation over Ethernet or USB especially via iDesign PC Software
- Pro**
- Usermanagement with password protection



## Technical data:

### HP print heads TIJ 2.5

#### Print heights

12,5 to 50 mm (depending on the configuration)

#### Print direction

Left/right or right/left, from the top or from the side

#### Print head distance

Maximum 5 mm from the product

#### Speeds

- Up to 90 m/minute with a resolution of 300 dpi
- Hi-Speed Version: up to 360 m/minute with a resolution of 150 x 300 dpi
- Barcode applications up to 60 m/minute

#### Resolution

- Horizontal: 50 to 900 dpi
- Vertical: 300 or 600 dpi

#### Number of nozzles

300 nozzles in 2 rows per 150 nozzles

#### Font size

From 1 to 12,5 mm per print head, up to 50 mm total

#### Ink

Water-based pigmented and non-pigmented inks for absorbent and semi absorbent surfaces, available in Black, Blue, Red and Green. Other inks on request. Solvent inks for non-absorbent surfaces, available in Black

#### Printhead variations

Long, short or flat print head types allow a individually installation (i.e. by crowded conditions)

#### Cartridge holder

Click'n Print holder (patent pending)

#### Key features

- Brilliant labeling quality and maintenance-free printer function
- Print resolutions of up to 900 dpi
- Print speeds of up to 360 m per minute
- Central ink supply (1,000 ml) available as an option

### Trident print heads MultiLine MX 50

#### Print heights

50 to 200 mm

#### Print direction

Left/right or right/left, from the top or from the side

#### Print head distance

Maximum 5 mm from the product

#### Speeds

- Up to 200 m/minute
- Barcode applications up to 60 m/minute

#### Resolution

- Horizontal: 50 to 600 dpi
- Vertical: 192 dpi (nozzles), 64 dpi (channels)

#### Number of nozzles

384 nozzles controlled by 128 channels

#### Font size

from 3 to 50 mm per print head, up to 200 mm total

#### Ink

Pigmented ink Scantrue II Black for absorbent surfaces

#### Printhead variations

Compact printing only from the side TOP and Vario on request

#### Cartridge holder

500 ml ink bottle

#### Key features

- Best labeling quality
- Low-maintenance print function
- Repairable printhead

### Trident print heads MultiLine MX 100

#### Print heights

100 to 400 mm

#### Print direction

Left/right or right/left, from the top or from the side

#### Print head distance

Maximum 5 mm from the product

#### Speeds

- Up to 200 m/minute
- Barcode applications up to 60 m/minute

#### Resolution

- Horizontal: 50 to 600 dpi
- Vertical: 192 dpi (nozzles), 64 dpi (channels)

#### Number of nozzles

768 nozzles controlled by 256 channels

#### Font size

from 3 to 100 mm per print head, up to 400 mm total

#### Ink

Scantrue II Black, Versa in Black, Red, Blue and Green (dissolved dye) for absorbent surfaces

#### Printhead variations

Compact printing only from the side TOP and Vario on request

#### Cartridge holder

500 ml ink bottle

#### Key features

- Best labeling quality
- Low-maintenance print function
- Repairable printhead

#### Ink

- HP ink cartridges:  
Water-based pigmented and non-pigmented inks for absorbent and semi absorbent surfaces, available in Black, Blue, Red and Green. Other inks on request. Solvent inks for non-absorbent surfaces, available in Black

- Piezo ink:  
Pigmented ink for absorbent surfaces, Pigmented standard ink in Black for MultiLine MX 50 and 100 mm print heads (optional: Ink with dissolved dye in Black, Blue, Red and Green, only for 100 mm print heads available)

#### Ink consumption

Automatic computation and display of the ink consumption for the current print image by the system

#### Weber Marking Systems GmbH

Maarweg 33 · D-53619 Rheinbreitbach  
Telefon: 02224 / 77 08 -7101  
Telefax: 02224 / 77 08 -20  
info@webermarking.de

www.webermarking.de

Copyright by Weber Marking Systems GmbH · X4JET 11/2010



**Weber**<sup>®</sup>  
LABELING & CODING SOLUTIONS